

Cabinet U-Handles

Steel / Stainless Steel, without Thread, for Welding

SPECIFICATION

Steel ST

Matte, shot-blasted

Stainless steel AISI 304 NI

Matte, shot-blasted

INFORMATION

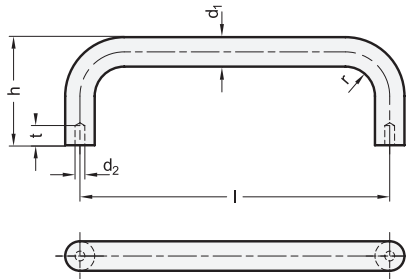
Cabinet U-handles GN 425.3 are made of bent steel or stainless steel sections and are affixed by welding.

The holes d_2 serve, if necessary, for inserting dowel pins or guide pins that provide a simple method for positioning and fixing the cabinet U-handle in place via the alignment holes in the opposing part for the welding process.

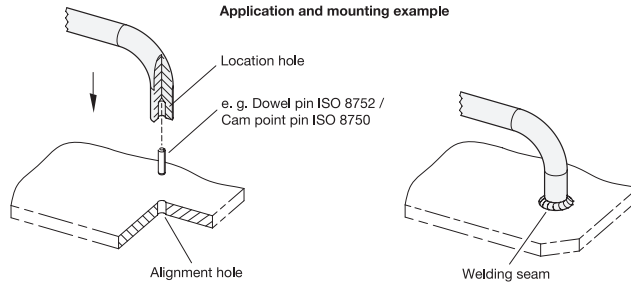


TECHNICAL INFORMATION

- ISO-Fundamental Tolerances (see page A21)
- Stainless Steel Characteristics (see page A26)



Application and mounting example



GN 425.3-ST

Description	d_1	Length l ± 0.5	d_2 H12	h	r	t	
GN 425.3-8-64-ST	8	64	3	35	10	5	46
GN 425.3-8-88-ST	8	88	3	35	10	5	55
GN 425.3-8-100-ST	8	100	3	35	10	5	58
GN 425.3-10-100-ST	10	100	3	43	12	5	98
GN 425.3-10-125-ST	10	125	3	43	12	5	113
GN 425.3-10-160-ST	10	160	3	43	12	5	138
GN 425.3-12-125-ST	12	125	4	51	14	6	172
GN 425.3-12-160-ST	12	160	4	51	14	6	203
GN 425.3-12-200-ST	12	200	4	51	14	6	242
GN 425.3-16-125-ST	16	125	4	59	18	6	320
GN 425.3-16-160-ST	16	160	4	59	18	6	373
GN 425.3-16-200-ST	16	200	4	59	18	6	444
GN 425.3-20-200-ST	20	200	5	68	22	8	720
GN 425.3-20-250-ST	20	250	5	68	22	8	800

GN 425.3-NI

STAINLESS STEEL

Description	d_1	Length l ± 0.5	d_2 H12	h	r	t	
GN 425.3-8-64-NI	8	64	3	35	10	5	46
GN 425.3-8-88-NI	8	88	3	35	10	5	55
GN 425.3-8-100-NI	8	100	3	35	10	5	58
GN 425.3-10-100-NI	10	100	3	43	12	5	98
GN 425.3-10-125-NI	10	125	3	43	12	5	113
GN 425.3-10-160-NI	10	160	3	43	12	5	138
GN 425.3-12-125-NI	12	125	4	51	14	6	172
GN 425.3-12-160-NI	12	160	4	51	14	6	203
GN 425.3-12-200-NI	12	200	4	51	14	6	242
GN 425.3-16-125-NI	16	125	4	59	18	6	320
GN 425.3-16-160-NI	16	160	4	59	18	6	373
GN 425.3-16-200-NI	16	200	4	59	18	6	444
GN 425.3-20-200-NI	20	200	5	68	22	8	720
GN 425.3-20-250-NI	20	250	5	68	22	8	800